

PASSWORD MANAGER > AUTOFILL >

Autofill Cards & Identities

View in the help center:

<https://bitwarden.com/help/auto-fill-card-id/>

Autofill Cards & Identities

Bitwarden can do more than just [autofill your usernames and passwords](#)! Bitwarden browser extensions can autofill [cards](#) and [identities](#) to simplify online purchases, account creation, and more.

Note

Currently, autofill for cards & identities is only available for browser extensions. Mobile platforms including Android and iOS do not currently support this type of autofill function.

Set up card & identity autofill

You can add or remove cards from your autofill suggestions and from the inline autofill menu using four settings found in the **Settings** → **Autofill** menu:

- **Display identities as suggestions:** Include identities in the inline autofill menu. This requires the **Show autofill suggestions on form fields** option to be on.
- **Display cards and suggestions:** Include cards in the inline autofill menu. This requires the **Show autofill suggestions on form fields** option to be on.
- **Always show cards as Autofill suggestions on Vault view:** Include cards in the suggestions located in the Vault view. These can be autofilled using the **Fill** button.
- **Always show identities as Autofill suggestions on Vault view:** Include identities in the suggestions located in the Vault view. These can be autofilled using the **Fill** button.





Autofilling cards & identities

Using the inline menu

To enable card and identity autofill using the inline autofill menu, turn on the **Display identities as suggestions** and **Display cards as suggestions** options as described in the previous section. The **Show autofill suggestions on form fields** option must also be turned on.

Once on, your stored cards and identities will be listed when you click on a form. Select the card or identity you wish to use when filling out a form information:

Credit Card

Name on card	<input type="text"/>
Type	<div> Marketing CC  Visa, *4444</div>
Credit card number	<input type="text"/>
CVV	<input type="text"/>
Expiry month	01 
Expiry year	2020 
	<div><input type="button" value="Pay"/></div>

Inline Autofill Card

 Note

If you do not have a card or identity saved in your Bitwarden vault, you may select + **New Card / New identity** from the inline menu after filling out the information to save the new item in your Bitwarden vault.

Using the Fill button

To autofill a card or identity using the **Fill** button, turn on the **Show cards as Autofill suggestions on Vault view** and **Show identities as Autofill suggestions on Vault view** options as described in the previous section.

Once on, your cards and identities will be available in the **Autofill suggestions** section of the **Vault** view. Select the **Fill** button to autofill:

Vault

+ New



 Search



 Vault



 Collection



 Type



Autofill suggestions

2

Save a login item for this site to autofill

Cards



Credit

Visa, *1234

Fill



Identities



Passport

John Smith

Fill



All items

9



Fill Card and Identities

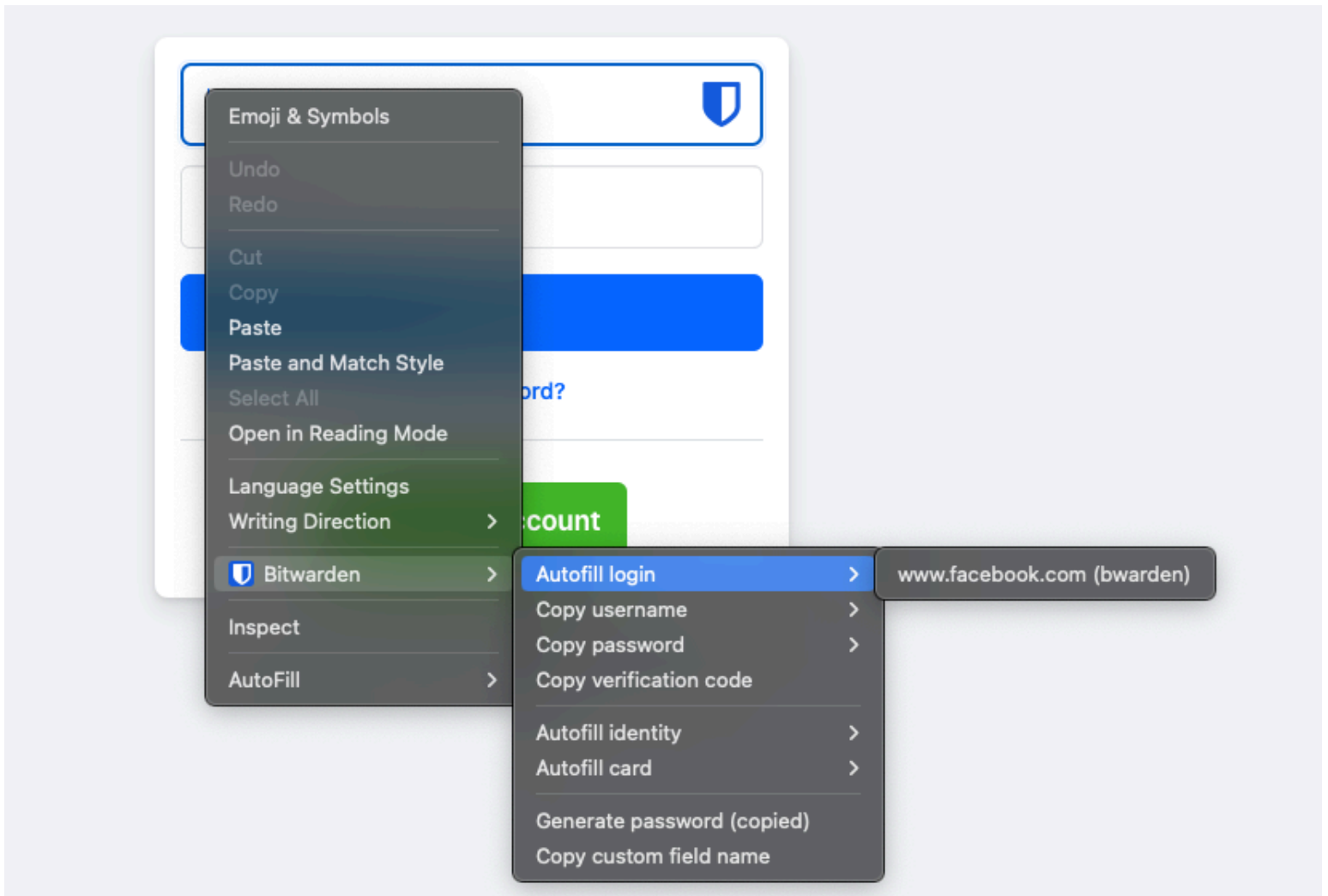
The browser extension will find any fields on the web page that map to card or identity information and autofill them.

Using the context menu

Note

Currently unavailable in the Safari browser extension.

Without opening your browser extension, you can autofill cards and identities by right-clicking on an input field and using the **Bitwarden** → **Autofill** option. If your vault is locked when you attempt this, a window will open prompting you to unlock. Once unlocked, the browser extension will automatically proceed with autofilling your information.



Browser Extension Context Menu

Using keyboard shortcuts

Cards and Identities can be autofilled using keyboard shortcuts. To use this feature, keyboard shortcuts must be manually set for cards and identities:

1. Open the Bitwarden browser extension and select **Settings**.
2. Select **Autofill** from the settings menu and then **Manage shortcuts** to open your browser's autofill settings window.
3. In the Bitwarden Password Manager keyboard shortcuts, configure keyboard shortcuts you would like to use for **Autofill the last used card for the current website** and **Autofill the last used identity for the current website**.