

PASSWORD MANAGER > BITWARDEN SEND

# Send Lifespan

View in the help center:  
<https://bitwarden.com/help/send-lifespan/>

## Send Lifespan

Unlike regular vault items and file attachments, Sends are ephemeral and have a **default lifespan of seven days** and can be set to last for up to 31 days using the [deletion date](#) option. When a Send reaches its deletion date, it's purged from Bitwarden systems and inaccessible to both sender and recipients.

Different client apps allow you to set additional limitations on access like an [expiration date](#) and/or [maximum access count](#) options. You can also manually [deactivate](#) or [delete](#) a Send at any time.

### Deletion date

By default, Sends will automatically be deleted seven days after they are created. Using the **deletion date** option, you can change this to a range of pre-specified options (for example, 1 hour, 1 day, 14 days, 31 days).

Deletion date has a **maximum allowed value of 31 days from creation**.

### Deletion behavior

When a Send reaches its deletion date:

- For recipients (anyone with the generated link), navigating to the Send link will show a screen reporting that the Send does not exist or is no longer available.
- For the sender, a 🗑️ **Pending Deletion** icon will appear next to the Send. The Send will pend deletion for a few minutes, after which it will be permanently deleted from Bitwarden systems and from the sender's view.

#### Note

Deleted Sends are not sent to or stored in the trash. Once the deletion has been confirmed, you will not be able to access the contents of a Send.

## Expiration date

#### Note

Only available in the web app and desktop app.

By default, Sends will never expire, [but they will be deleted](#). Using the **Expiration Date** option, you can select from a range of pre-specified options (for example, 1 hour, 1 day, 7 days) or specify a custom timestamp using the date picker (or in the text input in the format **MM/DD/YYYY HH:MM AM/PM**).

### Expiration behavior

When a Send reaches its expiration date:

- For recipients (anyone with the generated link), navigating to the Send link will show a screen reporting that the Send does not exist or is no longer available.
- For the sender, an ⌚ **Expired** icon will appear next to the Send. The Send will remain accessible to the sender until the specified deletion date is reached.

## Maximum access count (or, Limit views)

For all Sends, a **Current Access Count** ticker will track the number of times the Send link has been accessed:

#### Maximum Access Count

If set, users will no longer be able to access this send once the maximum access count is reached.


#### Current Access Count

Current Access Count ticker

You can specify a **Maximum Access Count** or, on browser extensions **Limit views**, that is any positive integer.

### Maximum access count behavior

When a Send reaches its specified maximum access (or **View**) count:

- For recipients (anyone with the generated link), navigating to the Send link will show a screen reporting that the Send does not exist or is no longer available.
- For the sender, a  **Max access count reached** icon will appear next to the send. The Send will remain accessible to its sender until the specified deletion date is reached.



#### Tip

The **Current Access Count** (or **View**) ticker counts:

- For text Sends, the number of times the link has been accessed.
- For file Sends, the number of times the contents are downloaded.

### Manually deactivate or delete


To manually deactivate or delete a Send from any Bitwarden app:

#### ⇒Web app

##### Deactivate from the web app

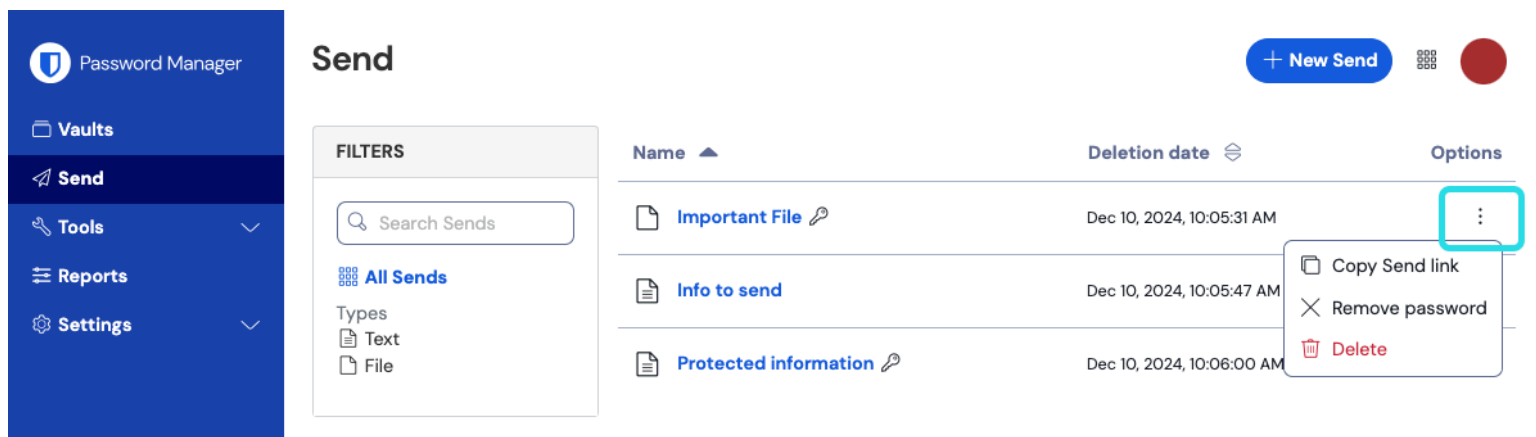
To deactivate a Send from the web app, open the **Edit Send** view, expand the **Options**, and check the **Deactivate this Send so that no one can access it** checkbox. You can uncheck this box at any time to re-enable access to the Send.

When a Send is deactivated:

- For recipients (anyone with the generated link), navigating to the Send link will show a screen reporting that the Send does not exist or is no longer available.
- For the sender, a  **Deactivated** icon will appear next to the Send. The Send will remain accessible to its sender until the specified **Deletion Date** is reached.

##### Delete from the web app

To delete a Send from the web app, use the  options menu to select the  **Delete** button:

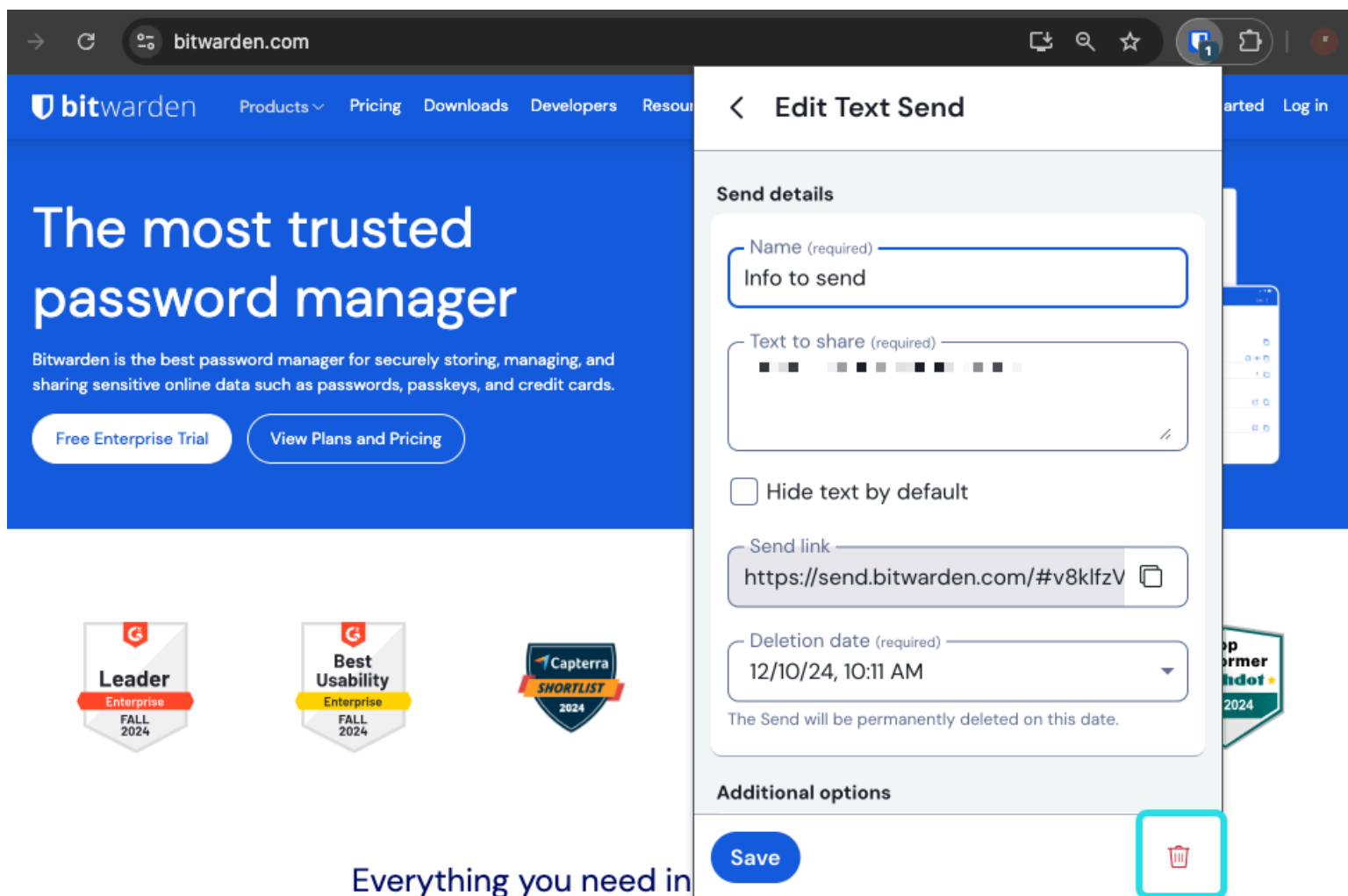


Send options

## ⇒Browser extension

### Delete from browser extensions

To delete a Send from a browser extension, select the **Trash** icon next to the Send you want to delete:

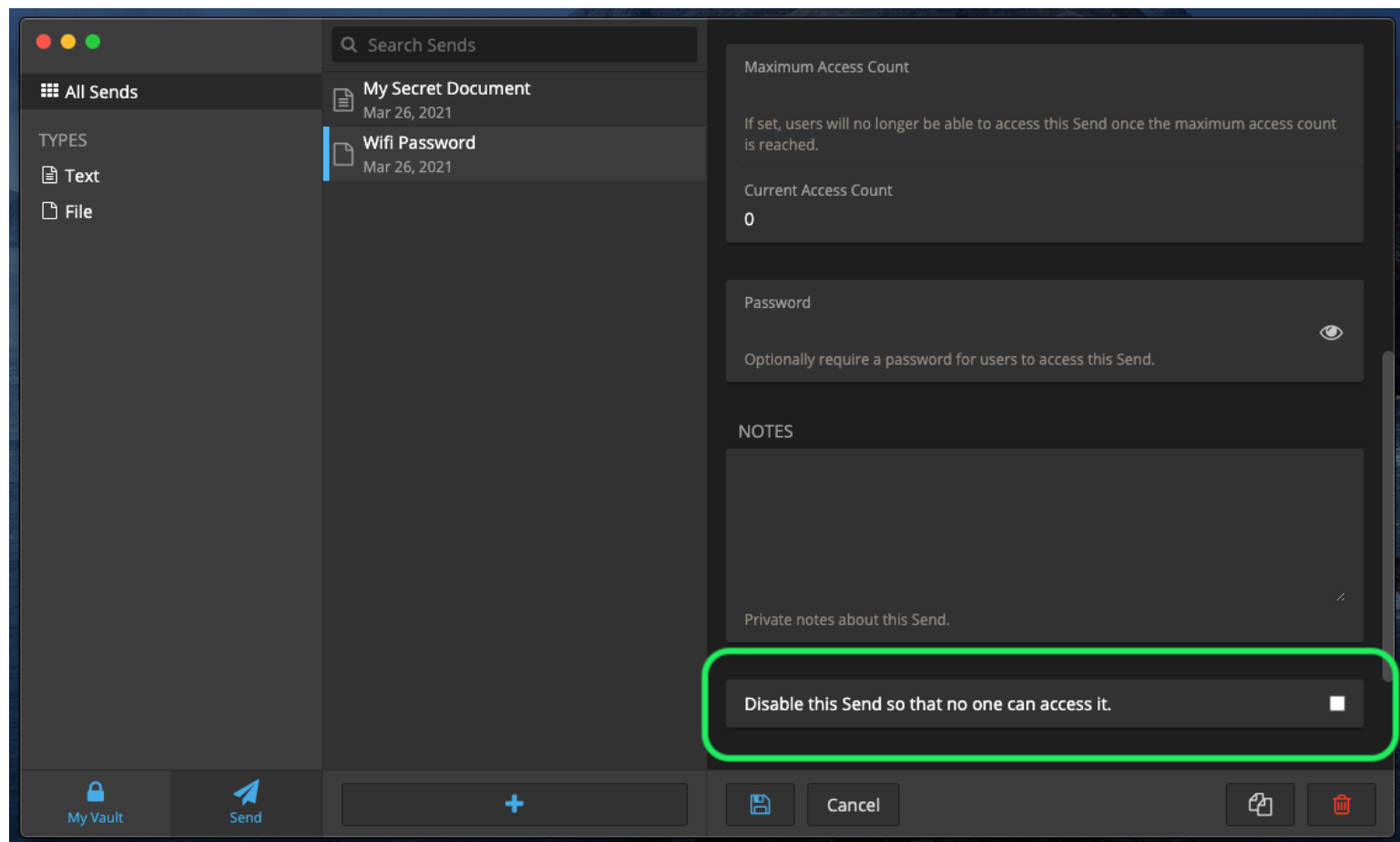


Delete Send from a browser extension

## ⇒Desktop


### Deactivate from desktop apps

To deactivate a Send from a desktop app, open the **Edit Send** view and check the **Deactivate this Send so that no one can access it** checkbox. You can uncheck this box at any time to reactivate the Send.



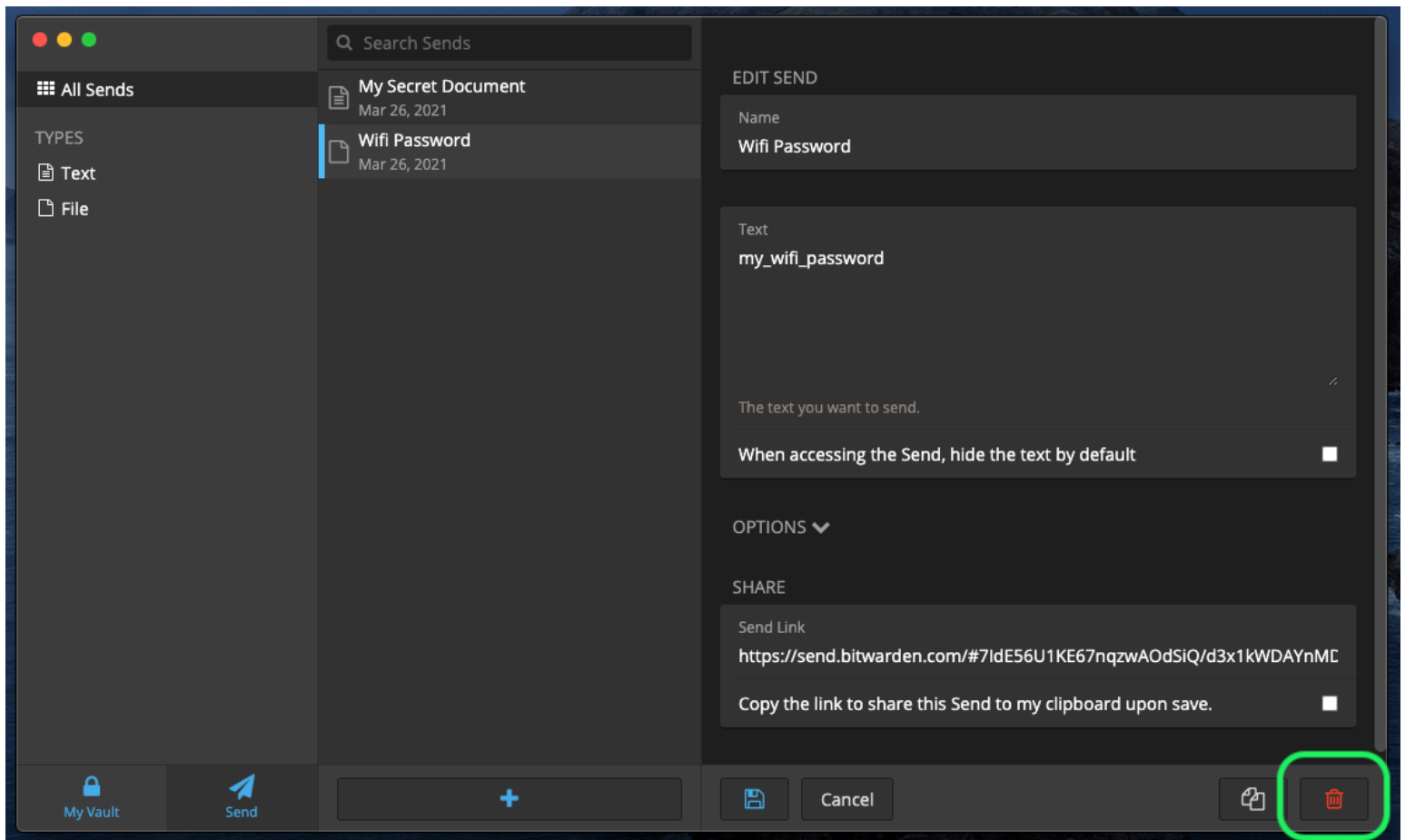
Disable from a Desktop App

When a Send is deactivated:

- For recipients (anyone with the generated link), navigating to the Send link will show a screen reporting that the Send does not exist or is no longer available.
- For the sender, a  **Deactivated** icon will appear next to the Send. The Send will remain accessible to its sender until the specified **Deletion Date** is reached.

### Delete from desktop apps

To delete a Send from a desktop app, open the **Edit Send** view and select the  **Delete** button:

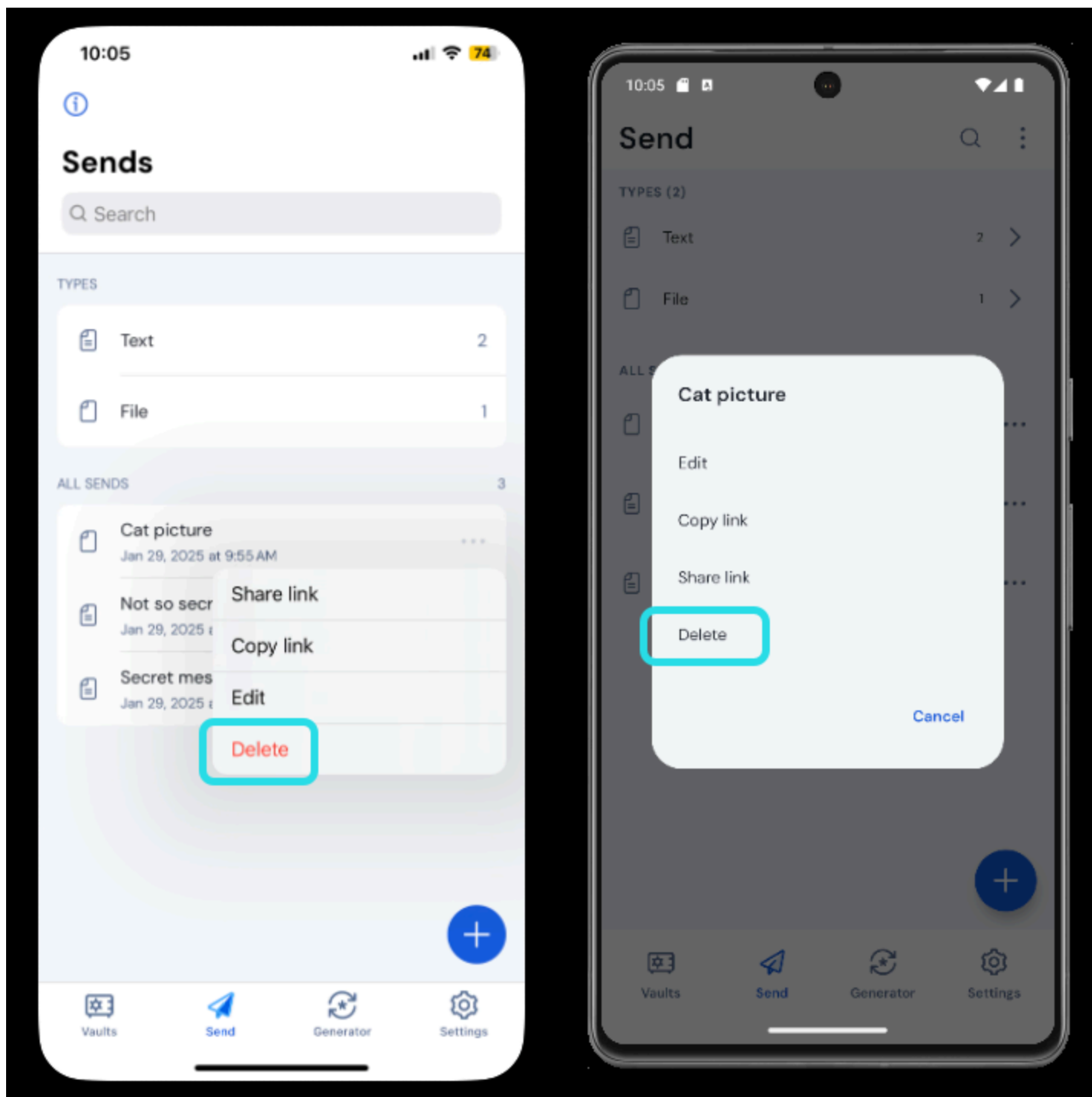


Delete from a Desktop App

## ⇒Mobile

### Delete from mobile apps

To delete a Send from a mobile app, tap the ⋮ options menu and tap the **Delete** option:



Delete a send on mobile

⇒CLI

### Disable from the CLI

To disable a Send from the CLI, you will need to use the **edit** command to change the **"disabled": false** key-value pair to **"disabled": true**, for example:

*Bash*

```
bw send get <id> | jq '.disabled=false' | bw encode | bw send edit
```

We recommend reading the [Send from CLI](#) article for more information.

### Delete from the CLI

To delete a Send from the CLI, use the **delete** command with the Send's exact unique **id** as an argument:

*Bash*

```
bw send delete <id>
```